

Introduction about International Student Dormitories 2019

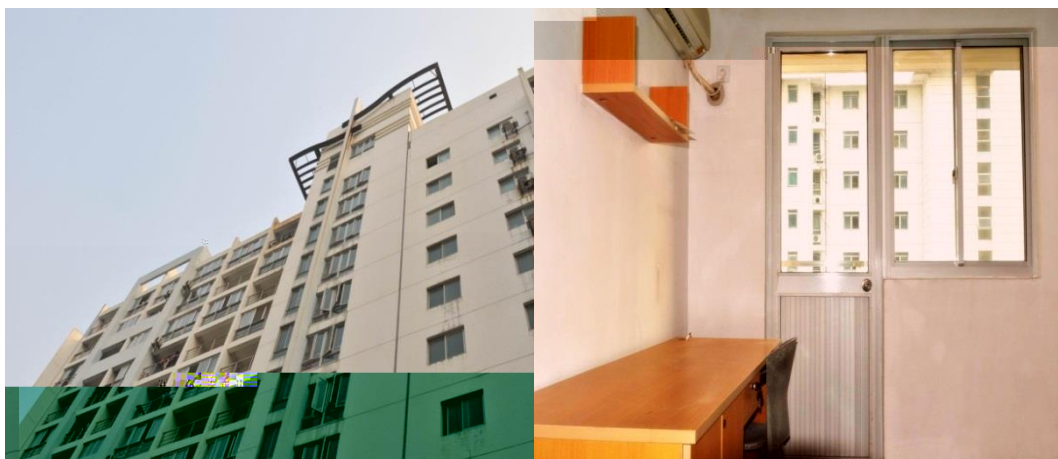
A. Student apartment building 18-22, Lane 280, Huatuo Road

Room Type

Dormitory Fee

B. Student apartment building 3-4, Lane 280, Huatuo Road

	A	B	C	D
Type	Double south	1. Double (north) 2. Single (south) above 3rd floor	1. Single (north) higher than 3rd floor 2. 1st 2nd floor (south)	1. 1st 2nd floor (north) 2. 1st 3rd floor (near the street)
Dormitory Fee (each room per month)	1600 RMB	1400 RMB	1200 RMB	800 RMB
Remark	It is about 400m from the main campus, equipped with wardrobe, air-conditioning, independent bathroom and desk. Single room has a big bed while double room has 2 single beds. There is 1 public kitchen on each floor, 1 boiling water machine for every 4 floors, laundry room for the whole building on Ground floor 1 with washing machines and dryers. Fees for water, electricity and WIFI are at your own expense.			



C. Student apartment 650, South Wanping Road

	A	B	C
Room Type	Single (4th to 5th floor)	Double (10th to 13rd floor)	Double in Suite (10th to 13rd floor)
Dormitory Fee (each room per month)	1200RMB	1000RMB	800RMB
Equipment	Air conditioning, separate bathroom, desk, bed, public boiling water machine, public laundry room	Separate bathroom, loft bed, desk, wardrobe, public boiling water machine, public laundry room	In-suite bathroom, loft bed, desk, wardrobe, public boiling water machine, public laundry room
Remark	It is about 17.5 km from the Pudong Campus but close to Longhua Hospital, the double room is arranged for 2 students. Fees for water, shower, electricity, WIFI are at your own expense. Students in room B and C need to pay for air conditioning rental fee.		

